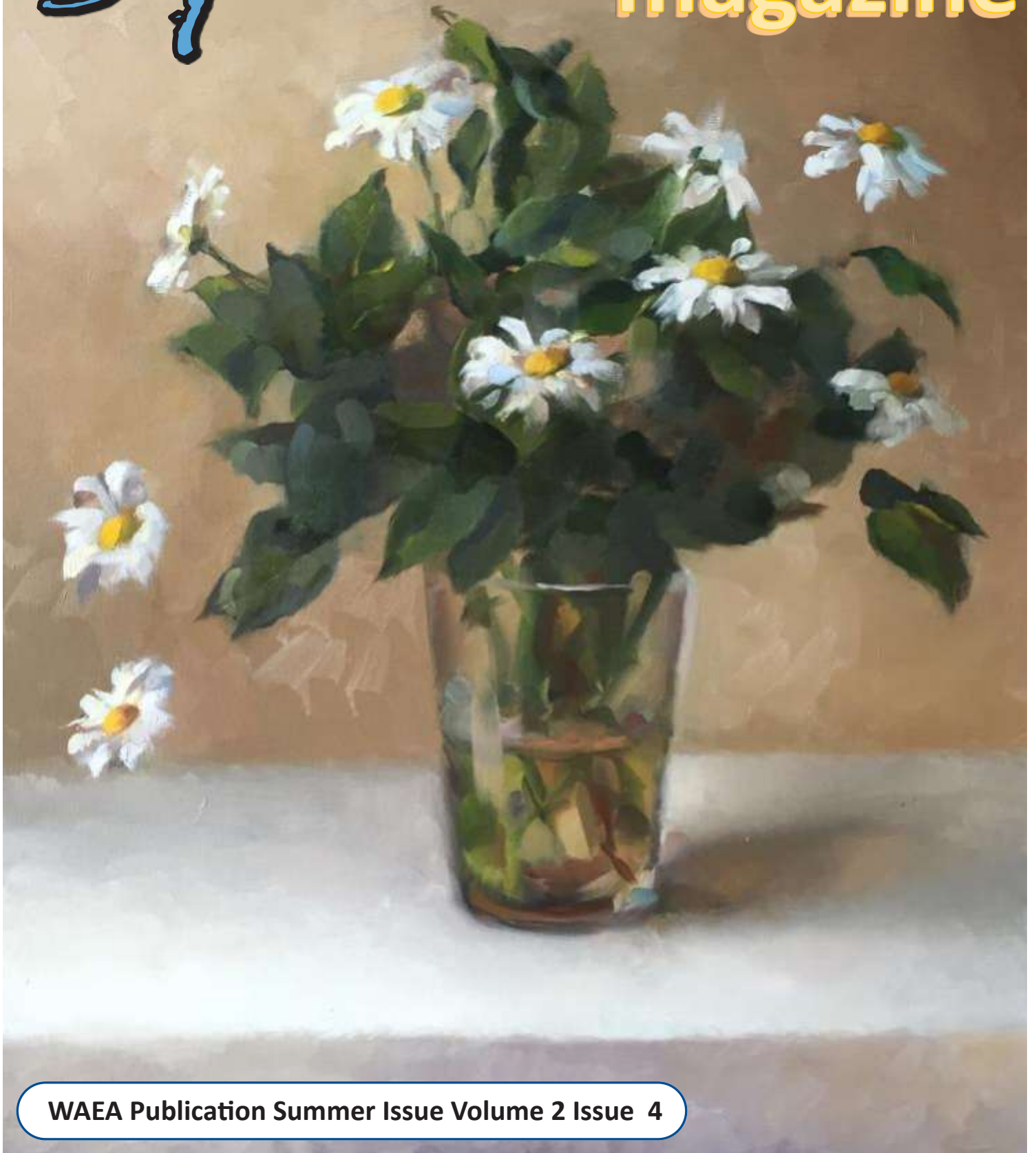


Splatter

magazine



WAEA Publication Summer Issue Volume 2 Issue 4

August 5-7, 2016 WAEA Summer Leadership Retreat



Business and pleasure wrapped in an artistic package!

All WAEA board members, committee chairs, ESD and division reps... plus anyone interested in serving in a leadership role in WAEA is invited to this weekend business and pleasure retreat.

Business activities will include reviewing strategic plan, mission statement, by-laws, job descriptions and annual budget. ESD and Division reps will brainstorm outreach ideas. The Co-Presidents will share out info from our D.C. training in July. All will help put with the finishing touches for fall conference planning.

Pleasure activities will include night star viewing with astronomy experts, lunch at a mini Stonehenge, and Museum visit with a special guest lecture. Possible nature activities (on your own) include hiking, cycling and white water rafting. Plus, Wine tours and Art Making. As well as... plenty of time for getting to know your fellow board members.

Friday August 5

- 1 pm: Hotel Check-in.
- 1:30- 4 pm: Meetings in the parlor and patio of the hotel.
- 4-6 pm: Break into small groups to visit local wineries and solicit donations for the fall conference.
- 6pm: Catered dinner at hotel
- 7-9 pm: "E-mail Gatheringathon" Bring your laptop to the parlor to help us collect e-mail addresses of potential new WAEA members.
- 9 pm: Volunteer Astronomers to share views of the summer night sky.

Saturday August 6

- 8-9 am: Breakfast at hotel
- 9-10 am: Meetings
- 11 am: Maryhill Museum tour
- 12-2 pm: Lunch meeting at Maryhill Museum
- 2 pm: Lecture: Design Reform in the American Home: Arts & Crafts Pottery
- 3:30-5 pm: Visit "Stonehenge" and have team activities
- 5 pm - Group dinner at The Glass Onion
- 7-9 pm Bring your favorite art supplies and wine to the parlor for art and sipping!

Sunday August 7: Local Activities with friends or on your own

HELP SHAPE THE FUTURE OF WAEA

RECHARGE BY MAKING ART

NIGHT STAR VIEWING WITH ASTRONOMY CLUB

LUNCH AT MINI STONEHENGE

The Balch Hotel

40 South Heimrich
Dufur, OR 97021
www.balchhotel.com

Hotel expenses will be partially covered for all current sitting board members.

Registration fee includes food, room and most activities.

**Register on EZ-REG before
July 15th, 2016**

\$150 for Queen Bed/ shared bath

\$75 for Shared Queen Bed/ Shared Bath

\$285 for Queen with a private Bath

\$150 for shared queen and private bath

(Non-board members can register if room remains after July 15th)

\$285 for non-board members

Register online: <http://waearetreat2016.ezregister.com>

Contents

WAEA Publication Volume 2 Issue 4 Summer 2016 Issue

Featured

- 2 Summer Leadership Retreat
- 6 Inspired by the Masters *by Gale Riley*
- 8 The Opportunity of a Lifetime: Chuck Close Prints: Process and Collaboration *by Mari Atkinson*
- 10 Taking and Bringing Back: An African Art Experience *By Russ Ford*
- 11 Museum Must Sees! *Collected By Samantha Kelly*
- 14 Digital Art by Primary Students *By Jan Leppert*
- 16 2016 Fall Conference Preview
- 18 Making Connections with the Washington State Art Collection *By Valerie Peterman*
- 26 Summertime...Time for... *By Dr. AnnRené Joseph*
- 28 Artistic Habits Around the Room... Lesson Plan *by Cynthia Gaub*
- 30 12MAX Art Show *Call for Art*



ABOUT THE COVER

Artwork: "Daisies"

Artist: Mandy Theis

Medium: Oil

Departments

- 4 Presidential Ponderings *From Pamela Valentine*
- 6 From the Editor *by Cynthia Gaub*
- 7 Upcoming Meetings and Events
- 20 Board Notes and ESD Reports *Summarized By Cynthia Gaub*
- 31 Organizational Splatter *Collected By Tracy Fortune*

30 Leadership Opportunities

- ~ Leadership Directory
- 22 WAEA Executive Board
- 23 New Division and ESD Reps
- 24 Committee Chairs/ Division Reps
- 24 Vice-Presidents: ESD Reps

Online

Website www.waea.net

Facebook <https://www.facebook.com/groups/57707416186/>

The mission of the Washington Art Education Association is to promote excellence in visual arts education in Washington State. The mission of Splatter is to inform the membership of WAEA and celebrate the accomplishments of its membership.

© Splatter Magazine is owned, printed and published electronically by the Washington Art Education Association. Copyright 2014-2016 Washington Art Education Association All rights reserved. No part of this printed or electronic magazine may be reproduced without the written consent of Washington Art Education Association. Requests for permission should be directed to: Splatter Magazine C/O The Editor Cynthia Gaub P.O. Box 1891 Snohomish, WA 98291 or email splatter@waea.net



Presidential Ponderings

By Pamela Valentine

As I open up this last “Presidential Pondering” my first thought is, Thank YOU! All of you who make up WAEA are a part of every decision we make, every direction we turn and every epiphany we have had in building the WAEA for the last few years. When we answer e-mails late into the night and contact people to arrange venues, or trainings, or tours we are thinking about how best to serve YOU and how best to grow the WAEA.

My journey to the WAEA Co-Presidency was a decade in the making. I started by attending our local ESD “art nights”— as time went on, I became more and more active and found myself right smack in the middle of the WAEA. I attended the meetings and when I could, I did jobs that I felt like I could handle. Soon, I found myself taking on the Co-Presidency with Mari Atkinson. It has been a wonderful journey and could not have been done without the support of every member of our board. These people, working tirelessly to do their best for WAEA is what makes our organization great.

A lot goes on behind the scenes and the Co-Presidents and other members of the Executive Board do our very best to keep in mind what YOU would like us to do. In the last couple of years, Co-President, Mari Atkinson finished the arduous task of writing

the job descriptions that Cathy Tanasse had started when she was Co-President with Richard Serpe. The work continues from one Presidency to the next because there are always more bridges to cross, more ideas to consider and more organizational depth to be built! Mari completed this job admirably and now we have written job descriptions for ALL of the board positions for WAEA!



During this last year we had a changeover in our Treasury job as well. After many years of service, Katie Hall passed the baton off to Toni Minish. Toni took that lead and ran with it! She has put in many hours of study and hard work to learn and understand the financial aspects of our 501 c 3 organization. She has us in great shape

to eagerly face our future- and what a future it promises to be!

When we elected Cynthia Gaub as our next WAEA President, we knew we were in for a fantastic ride loaded with possibility and innovation galore! THEN when we were able to add Amanda Theis as Cynthia’s Co-President, our course was truly set for an adventure like no other! These two amazing women will guide us into our next fall conference and they are poised to make it truly ARTASTIC! But that’s not all! These two dynamic individuals will be the



captains of our ship as we host the 2018 NATIONAL ART EDUCATION ASSOCIATION Conference in Seattle!

Now is the time to get on board and become a working member of YOUR WAEA! There are jobs to do and fun to be had with people who are volunteering their hearts and souls to make sure that the Arts are prominent in EVERY school in our beautiful state. Step up and work in your own school, your own ESD or even at the state level! Go to www.waea.net and check out our job openings as well as get information about what WAEA activities are available in your local ESD.

When a WAEA meeting comes to your area, GO! Then go to the activity that we have planned for the featured "Destination Meeting"

and, of course, go to lunch with us! Do this and you will create friends that understand you, extended family that will never forget you and a network that strengthens every time WAEA adds one more ACTIVE member!

So I will end as I began- a big THANK YOU to ALL of you as we go into our bright and happy future! I have never been so blessed and I have never been so proud of all of you who work together and play together to make WAEA strong and vibrant now and FOREVER!

Because of you, YOUR Washington Art Education Association ROCKS!

Pamella Valentine teaches Junior High at Oakland Bay in Shelton WA and is the WAEA Co-President.



K-12 Art Textbooks & Resources

Flexible Resources for Every Art Educator!

All of Davis' core textbook programs are **written by experience art educators** who provide a wealth of ideas, fine art images, and studio experiences to enhance your instruction.



Davis K-12 curriculums are available in both print and digital formats for students and teachers. But Davis **eBooks are more than just digital copies!** Each eBook purchase gives you access to the **only advanced digital platform designed by art educators for art educators.** You and your students can easily **create your own digital art portfolios**, and as a teacher, your **Curriculum Builder is a unique and powerful tool for planning and presenting your lessons.** And it's all FREE with the purchase of our eBooks.

For more information, contact your local representative, Nick Sinnott, at **503-351-3551**, or email **NSinnott@DavisArt.com**, or visit **DavisArt.com**.

► Go to **DavisArtSpace.com** to sign up for a test drive of our eBooks.





Inspired by the Masters

From Gale Riley

I have always been inspired by my high school art teacher, Rob Gischer. He taught art and film at Blaine High School for 3 decades; systematically rotating around the studio to give each student personal advice on their work. He was at my elbow giving me professional assistance a couple times a week! He has had numerous group and solo shows. Recently, I purchased a couple of his works shown at the four corners Gallery in Bellingham, which obviously were inspired by another great master: Vincent Van Gogh! Rob is pictured here in my home with his painting. He painted this piece after reading a biography on Vincent Van Gogh. He produced the Einstein image after reading a biography on him too. Rob retired in 1995--my first year of teaching in North shore, now WAEA member Brian Smith runs with the baton there in Blaine. I am proud of Brian, as he has remained faithful to the legacy left there in Blaine by Rob. Brian's student won a top award at the OSPI show this year on an oil painting. It all leaves me very INSPIRED!



From the Editor

By Cynthia Gaub

Organizational Vibrancy is one of the NAEA initiatives handed down to each of the state affiliates. If you haven't noticed lately, our association is rocking on the vibrancy! The Splatter publication is just one of the ways we are building up the vibrancy of our organization.

It has been so exciting, as your editor, to see each issue come together. At first, it was difficult to get articles, and often the most involved board members would write things up at the last minute to fill the pages. But after eight issues, we now have consistent submissions from members across the state, including several new authors in this issue. If you haven't submitted yet, what are you waiting for? This is YOUR magazine and can only be successful with YOUR participation!

Over the past two years, we have added advertisers to help support the costs, started mailing issues to your home, included both

student and teacher artwork and have information galore jam packed into every issue. We hope that the information has been valuable to both your personal and professional practice as well as providing a glimpse behind the curtain to understand what is involved in making the WAEA a growing and valuable organization.

I hope that the next two years will show equal (if not more) growth and excitement in both our publication and our organization. But we can't accomplish that without dedicated, enthusiastic and passionate members. I challenge you, during your summer down time, to look for articles you can write and ways that you can support the continued growth and vibrancy of WAEA. Check out the **Leadership Opportunities** in the back of this issue, or even join our summer leadership retreat. Ask and offer and you will receive tenfold what you give! I know I have!

Cynthia Gaub teaches art and tech at North MS in Everett and is the Co-President Elect and Splatter Editor.



Upcoming Meetings and Conferences Get Involved!

WAEA Board meetings are open to all members to attend. Feel free to bring questions and great ideas to make our organization more vibrant. Most meetings include a social (no host) lunch and activity or tour. So plan to spend the day with us!

August 5-7, 2016	Maryhill Museum Dufur, OR		Summer Leadership retreat <i>See MORE details on the website and Facebook.</i>
September 24, 2016	Western Washington University Bellingham WA	10:30-12:30	<i>Help stuff SWAG bags and make the final details for the fall conference.</i>
December 17, 2016	<i>(tentative)</i> Tacoma Art Museum	10:30-12:30	Rebecca Benaroya Collection of Pilchuck glass and northwest painting, 30 Americans.
January 14, 2017	<i>(tentative)</i> Portland Art Museum	10:30-12:30	Portland Art Museum

Additional Meetings for the 2016-2017 School year will be planned at the August Leadership retreat. If you would like to host a meeting in your area, contact your ESD rep or any board member.

WAEA Conferences

Bellingham, WA: October 14-16 2016

No Fall Conference 2017

(due to National Convention)

Vancouver, WA: October 2018

NAEA Convention

New York: March 2 - 4, 2017

Seattle: March 22 – 24, 2018

Make your Mark with a Splatter

We are accepting lesson plans articles and ESD Reports for quarterly publication. We are looking for ARTICLES THAT ARE photo rich, AND FEATURE student successes, awards, community building activities OR lesson plans. You must be an Active NAEA/WAEA member to be published. See additional submission guidelines on the WAEA website. Plan ahead for one of our future issues. You can always submit early! Student art and Lesson plans accepted every issue!



- **Fall Theme: Professional Development/Conference Issue Sept. 15 deadline**
- **Winter Theme: Advocacy Issue Dec 15 deadline**
- **Spring Theme: Leadership Issue March 15 deadline**
- **Summer Theme: Renewal and Artistic Expression Issue June 15 deadline**

Submit articles through the editor, Cynthia Gaub. splatter@waea.net



Opportunity of a Lifetime: Chuck Close Prints: Process and Collaboration

By Mari Atkinson

The Schack Art Center has brought the magic and wonder of Chuck Close to Washington State! Be sure to make this exhibition a 'must see' this summer. The exhibit opened on May 12, and will run through September 5, 2016.

My introduction to the work of Chuck Close came about when I was an art student in the early '70s and viewed "Nancy" at the Milwaukee Art Museum. I still remember the power this painting had over me; stunned at the size and the somewhat hideous realism, I could not look away. Viewing this work up close I could see all the unbelievable intricate details, but then by stepping back it appeared to be just an enormous photograph. Since I am the same age as Close, there was not much information about him back-in-the-day, but I never forgot this initial experience.

Years later, I came to understand that "Nancy" was a portrait of the artist, Nancy Graves. I had never imagined the portrait was of a *real* person because who would allow themselves to be portrayed by showing every facial flaw? This sent a strong message and made me think about the fact that no one is perfect, yet imperfection can be beautifully humanizing when portrayed as an art form.

My next encounter with Chuck Close came many years later, when my daughter and I attended a lecture and book signing in 2008, at the Pantages in Tacoma. Close reflected on his 40-year career, and discussed his approach to portraiture. I was thrilled to learn that Close was actually from Washington, and hoped that would bring future opportunities to see his work. However, I never dreamed there would be such an incalculable exhibition in Everett, as *Chuck Close Prints*.

When naming the exhibition, the word 'prints' is key as it serves as both a

verb and a noun, which delighted both Close and curator Terrie Sultan. Sultan explains the rest of the title in her introduction of the publication: "Close has complete respect for, and trust in, the technical processes — and the collaboration with master printers — essential to the creation of his prints. The creative process is as important to Close as the finished product. *Process and collaboration* are two words that are essential to any conversation about Close's prints." What a perfectly inspiring example for guiding students' understandings in the applicability of *National Core Art Standards*.

"It's still magic even if you know how it's done."

Terry Pratchett

As a child, Chuck Close had a great deal of difficulty with reading and math before dyslexia was understood; he vividly remembers feeling and being called *dumb*. As a way to make friends, Close became skilled at performing magic tricks. However, Close — interested in process over product even as a young boy — was not the typical magician who kept the tricks' secrets to himself. Close delighted in explaining how he made the tricks work. Even after knowing the secret behind the magic, Close's peers were always still amazed. Funny how this is true to this day. In the exhibition, Close reveals the secrets behind each of his works, yet viewers still experience awe, wonder and... sheer magic.

The power of all art lies in the connectivity; and this is magical. Art educators everywhere will agree there is nothing more magical than



witnessing students who discover their untapped potential, or being the guide on the side as confidence blooms in the most silent of students who uncover their visual voice. Magic lies in the way visual art connects people and curriculum, as well as all aspects of life.

Art educators often search to find just the right project to spark authentic student engagement; however this may only come about from a sense of connection and trust between teacher and student. Let's face it, creating in a classroom environment after all, can put students into a state of uncomfortable vulnerability. The exhibition exemplifies the trust Close has with each of his sitters, as they've allowed him to photograph and scrutinize every wrinkle and follicle for representation in a deconstructing and reconstructing visual art process.

Chuck Close Prints: Process and Collaboration contains approximately 125 images ranging from 1972 to the present, and shows the range of invention in etching, aquatint, lithography, handmade paper, direct gravure, silkscreen, traditional Japanese woodcut, fingerprints, and reduction linocut, among others. "More than just a painter, photographer, and printmaker, Close is a builder who, in his words, builds painting experiences for the viewer. Highly renowned as a painter, Close is also a master printmaker, who has, over the course of more than 30 years, pushed the boundaries of traditional printmaking in remarkable ways" (*Dawson Cole Fine Art Biography*).

I hope you all take time to view the exhibition this summer, and bring the *magic* back to your students in the fall.



Close actually discovered in kindergarten that he could not recognize faces: "Even by the end of the year I didn't recognize anyone in my class" (interview by Tom Valeo, *Tampa Bay Times*). Close has prosopagnosia, known as face blindness. He is only able to see separate parts of faces, but cannot put the parts together into a memorable impression. He does have a photographic memory for things that are two-dimensional, which is why he works almost exclusively from photographs. This again makes Close a powerful influence for students. "Everything about my work is driven by my disabilities," Close often tells audiences, as he recounts that his disabilities that have helped him become one of the most successful artists of his generation.

Schack Art Center's hours of operation are as follows:

Monday through Friday 10am-6pm;
Saturday 10am-5pm; and Sunday 12-5pm.

Exhibition-Related Events/Special Hours:

Third Thursdays Late Night:

Open Till 8pm: June 16, July 21, and August 18.

Admission Prices General: \$10,
Schack Members / Seniors (65+) / Youth (7-18) /
Military: \$5

**Free Days: Everyone receives free admission
on Mondays during the exhibit.**

Mari Atkinson teaches middle school art at Olympic View MS in Mukilteo WA and is the WAEA Co-President and Pacific Region Middle School Rep.



Taking and Bringing Back: An African Art Experience

By Russ Ford

Somewhere on the road to retirement after 25 years in the artroom, it occurred to me that it had taken me a long time to acquire the skillset that contributed to a successful program and a satisfying career. It seemed a waste to just let it all go...except I was ready for something new. That **something** began with an invitation to be the first artist-in-residence at WayiWayi studios in Livingstone, Zambia.



My experience began with a warm welcome to the WayiWayi studio from my hosts, Agness and Lawrence Yombwe

The WayiWayi Studio story began years ago when Lawrence and Agness both having earned recognition as Zambia's renown artists, shared a vision of building an art compound that would be used as a classroom, a studio, gallery space and a place to gather the arts community together. They also envisioned an stream of artists and arts educators coming from the far corners of the world as temporary residents to share and infuse their unique approach to the arts.

Years of piece-by-piece effort has resulted in a new facility that houses a large art classroom, storage

and artist-in-residence facility adjacent to an even larger outdoor teaching area. It was part of my mission to work on completing the facility but capable local workers were already doing that when I arrived, so I was free to pursue art projects, work with the students...and in Agness's words, "be my own boss".

I had a number of goals while on "mission" for the month, and they included: setting up and firing a Raku kiln, establishing a ceramic studio, and working with as many students as I could.

One gift that I had not counted on was a reordering of ideas of what community meant to me. That came by becoming a part of the Yombwe family and a community of artists, art educators arts activists committed to breaking down social barriers through the arts.



Read more about the trip on my blog: <http://russinafrica.blogspot.com/>

Russ Ford is a former board member and WAEA Award winner. He is retired but still making and teaching art in any way that he can.



Broad view of the WayiWayi compound and outdoor art space



Museum Must Sees!

Collected By Samantha Kelly

As you prepare for the new school year, consider a trip to your local museum to jump start the creative process. These “must see” exhibitions feature a variety of media and approaches to art that are sure to delight and



From 30 Americans: Jean-Michel Basquiat
Bird On Money, 1981
Acrylic and oil on canvas 66 x 90 inches
Courtesy of the Rubell Family Collection

inspire both you and your students!

ESD 189: Northwest WA

Whatcom Museum (Bellingham)

<http://whatcommuseum.org/exhibitions/>

Spineless: Portraits Of Marine Invertebrates

September 24 – December 31, 2016

The result of seven years of fieldwork across the Pacific Ocean, this exhibition showcases the photographic techniques Susan Middleton with 50 portraits of rarely or never-before-seen ocean dwellers. Middleton's images open our eyes to both the fragility and the resiliency of these species.

National Geographic's 50 Greatest Photographs

October 1, 2016 – January 15, 2017

Coming in the Fall of 2016, the Whatcom Museum will open the traveling exhibition *National Geographic's 50 Greatest Photographs*. From Steve McCurry's

unforgettable Afghan girl to Nick Nichols' iconic image of Jane Goodall and chimpanzee to Thomas Abercrombie's never-before-seen view of Mecca, the exhibition includes some of *National Geographic* magazine's most-remembered and celebrated photographs from its more-than-120-year history.

Cascadia Art Museum (Edmonds)

<http://www.cascadiaartmuseum.org/exhibitions/>

A Spirit Unbound: The Art of Peggy Strong

September 2016—January 2017

Cascadia Art Museum is proud to present a solo exhibition of the work of Peggy Strong.

Schack Art Center (Everett)

<http://www.schack.org/exhibits/>

Pilchuck Prints

October 6 – November 5, 2016

Pilchuck Prints, curated by Tina Aufiero, Artistic Director at Pilchuck Glass School (PGS), will feature works by artists who print on glass, along with works by PGS 2015 Emerging Artists in Residence in the Schack's main gallery. Upstairs, the mezzanine gallery will feature 21 prints created by high profile glass artists in the PGS Vitreography Studio such as Lino Tagliapietra, Cappy Thompson, Dick Weiss and Walt Lieberman.

ESD 114: Peninsula, WA

Bainbridge Island Museum of Art

<https://www.biartmuseum.org/exhibitions/>

Artist's Books: Chapter 8 - Everything-Including The Kitchen Sink

June 1 – October 2, 2016

Artist's books are infinitely varied! In this chapter alone—using a wide range of forms and structures to illustrate their content— they deal with many diverse subjects.

ESD 121: Puget Sound, WA

Bellevue Arts Museum <http://www.bellevuearts.org/exhibitions/index.html>



Museum Must Sees! continued

Emancipating the Past: Kara Walker's Tales of Slavery and Power

July 8 – November 27, 2016

Kara Walker is one of the most high-profile and controversial artists working in America today. This exhibition includes several of Walker's large-scale print series, cut-steel sculptures, a mural, and a video installation, displaying the range of approaches the artist has taken to exploring the legacy of slavery and its impact on contemporary American identity. Her narratives unfold throughout elaborate tableaux that tackle issues of race, slavery, sexuality, identity, and power.

BAM Biennial 2016: Metalmorphosis

September 2016 – January 2017

In 2010, Bellevue Arts Museum launched the BAM Biennial, a juried exhibition occurring every two years which focuses on the work of established and emerging Northwest artists, craftspeople, and designers, with an emphasis on current and new work. The fourth edition in the series, *BAM Biennial 2016: Metalmorphosis*, is focused on the medium of metal and the metaphysical realms.

Henry Art Gallery (Seattle)

<https://henryart.org/on-view/exhibitions>

Paul McCarthy: White Snow Wood Sculptures

March 2016 – September 2016

The Henry presents the first comprehensive presentation of American artist Paul McCarthy's series of black walnut sculptures in an American museum. Ranging in height from three to fourteen feet, the works are the product of the artist's interest in the nineteenth-century German folktale *Schneewittchen* (Snow White) and Walt Disney's beloved 1937 animated classic film.

Kirkland Arts Center

<http://kirklandartscenter.org/exhibitions/>

Check website for fall exhibitions

Museum of Glass (Tacoma)

<http://museumofglass.org/exhibitions>

Into the Deep

September 2016 – September 2017

Into the Deep will introduce visitors to the similar properties between glass and water, taking them on a journey through the wide possibilities of glass and the beauty of marine life. The pieces in the exhibition reflect the movements, textures, shapes, and colors associated with being underwater through the medium of glass. *Into the Deep* includes more than 55 pieces, 15 of which were made in the Museum of Glass Hot Shop.

Art Deco Glass from the David Huchthausen Collection

October 2016 – September 2017

Longtime collector and renowned artist David Huchthausen will debut a selection of his Art Deco glass collection at Museum of Glass. The exhibition will highlight the historic European roots of the Studio Glass movement with works of art characterized by smooth lines, geometric shapes, streamlined forms, and bright colors dating back to the 19th and 20th centuries.

Tacoma Art Museum

<http://www.tacomaartmuseum.org/explore/exhibitions/>

30 Americans

September 2016 – January 2017

The critically acclaimed exhibition *30 Americans* will make its West Coast debut at Tacoma Art Museum. *30 Americans* showcases an influential group of prominent African American artists who have emerged as leading contributors to the contemporary art scene in the U.S. and beyond. This exhibition will feature more than 50 works of paintings, sculptures, installations, photographs and videos from artists including, Jean-Michel Basquiat, Nick Cave, Robert Colescott, Glenn Ligon, Kerry James Marshall, Wangechi Mutu, Lorna Simpson, Mickalene Thomas, Kara Walker, Carrie Mae Weems, and Kehinde Wiley.

The Beauty of a Shared Passion: Highlights from the Rebecca and Jack Benaroya Collection

October 2016 – April 2017

The Rebecca and Jack Benaroya Collection features a selection of major works from the promised gift to TAM. The exhibition will include about 60 works of





Also from *30 Americans*: **Glenn Ligon**
America, 2008
Neon sign and paint, ed. of 1 plus AP
24 × 168 inches

paintings, sculpture, and glass art. The Benaroya Collection includes iconic examples of works by world-renowned artists including Dale Chihuly, Dan Dailey, Kyohei Fujita, Ginny Ruffner, Stanislav Libenský and Jaroslava Brychtová, Lino Tagliapietra, Cappy Thompson, and Ulrica Hydman Vallien.

Seattle Art Museum

<http://seattleartmuseum.org/exhibitions>

Yves Saint Laurent: The Perfection of Style

October 11, 2016 – January 8, 2017

The Seattle Art Museum presents *Yves Saint Laurent: The Perfection of Style*, showcasing highlights from the legendary designer's 44-year career. Drawn from the collection of the Fondation Pierre Bergé—Yves Saint Laurent, the exhibition features new acquisitions by the Foundation that have never been shown publicly before. With a selection of 100 haute couture garments, SAINT LAURENT rive gauche clothing and accessories, photographs, drawings, films and other multimedia elements from the Foundation's vast archive, the exhibition details development of Saint Laurent's style and recurring themes throughout the designer's career.

ESD 112: Southwest, WA

Maryhill Museum of Art (Goldendale)

<http://www.maryhillmuseum.org/visit/exhibitions>

Maryhill Favorites: Animal Kingdom

March 15 – November 15, 2016

Maryhill Museum of Art's painting collection contains more than 250 works, most created during the 19th and 20th centuries in America and Europe. This exhibition features a wide range of animal-centric works, including pastoral paintings and equestrian scenes, along with exotic birds, sheep and man's best friend, the domesticated canine. During the 19th century, it was common for European and American artists to include domesticated livestock in their pastoral landscapes; some artists specialized in painting specific animals, others created domestic exteriors with barnyard animals or indoor genre scenes that included cats, dogs and other species. As modern life has distanced us from animals, they have disappeared from daily view and likewise have become largely invisible in the world of art. *Animal Kingdom* looks back to a not-so-distant past when human interaction with animals was common. Among the artists included are Jakob Bogdani, François Pieter ter Meulen, George Bernier, George Wright and Edwin James Douglas.

ESD 101: Northeast, WA

Museum of Art/WSU (Pullman)

<https://museum.wsu.edu/events/exhibit/>

Northwest Alternative Comics

September – December 2016

The Northwest is seen by many as the birthplace of alternative comics, a genre which blended the legacy of Bay-Area "underground comix" with a DIY punk-ethos, while in step with a burgeoning independent music scene. Coalesced around Evergreen State College, in the early 1980s, gifted cartoonists Matt Groening, Lynda Barry, and Charles Burns published their comic strips in small alternative weeklies, helping to lay the foundation for the cultural phenomenon that would develop around Seattle in the 1990s. Originally underground and bohemian-based, today the regional comic scene is bigger and more active than ever before.

Northwest Alternative Comics will feature a



Digital Art Work by Primary Students

By Jan Leppert

Digital tools are powerful, flexible and efficient.
They ignite imaginations.

Three years ago Yacolt Primary School decided to enhance the Visual Arts program by teaching art concepts with an emphasis on technology. Our art program has been greatly improved by adding digital tools along with traditional media to teach students about the Elements of Art and Principles of Design. When in the art room, every student has access to a laptop computer, Wacom drawing tablet and pen.



First graders concentrate as they learn to watch the monitor and draw with the pen.

Teaching Visual Arts through technology at Yacolt Primary evolved slowly. We recognized working digitally as an important art media. We wanted students to experience the joy of creating digitally while learning how to use computers as learning tools. For several years, art classes met in the computer lab once each month, instead of the art room, to use basic draw programs. Even though students had to use an awkward mouse to draw, they loved using the computers to make digital pictures. Since this happened during art class, every student in the school had an opportunity to use the computer lab. In the spring of 2013 Yacolt Primary's principal, Ken Evans, asked if I could effectively teach my curriculum digitally. After considering the pros and cons of

such a change, we determined that students would benefit from this addition to the art program. The next step was to consult with our school district's Technology Director, Scott McDaniel. With his support and guidance, we purchased the necessary hardware. This included laptops and Wacom drawing tablets with pressure sensitive pens. The Battle Ground Technology Department set up the hardware, loaded software, and continues to provide training and support whenever needed.

Our students gain technology skills as they learn about visual arts. These skills are a happy byproduct of the art lessons. Every student receives the same opportunities to create work digitally. In the words of Sir Ken Robinson, "You can't just give someone a creativity injection. You have to create an environment for curiosity and a way to encourage people and get the best out of them." In our program, we have created and nurtured this reality.

Problem solving and revising are an important part of this creative process. It's easy to teach students to effectively use layers to depict the Art Element space when you have a draw program with layers. Designing tessellations and making intricate patterns can be completed in a much shorter time using laptops. Value and color studies can be developed at a more precise level than on paper with young artists. I have learned that most of the skills I teach can be done more effectively using digital tools. Students learn to save their work to their google drive, where they can share it with family and friends.

Certainly there are some non-digital art lessons every child should have. Using model magic in primary colors to mix secondary colors is a favorite of first graders. Painting on paper and print making are skills students should experience. I have found that the work my students produce using



traditional media has improved since we started to regularly work digitally. Students recognize that there can be many solutions to the same problem and that small changes can have big effects. Students view revisions and adjustments as part of the creative process.

“Kids learn best when they are creating something, when they are learning to be something, not just learning about it. The great thing about the Yacolt program is how it blends the use of new tools with the deeply motivating practice of creating.” -Scott McDaniel, Director of Technology Services and Security, Battle Ground Public Schools.

Embrace digital tools in your art program to help your students move forward in our digital world - even at the primary level..

Yacolt Primary School is one of eighteen schools in Battle Ground Public Schools. It is located in Yacolt, Washington. This southwest Washington town of just over 1500 residents is in the foothills of Mt. St. Helens, about 40 miles northeast of Portland, Oregon. Yacolt Primary School is a large primary school, providing services to 776 kindergarten through fourth grade students. All first through fourth grade students attend a forty minute Visual Arts and Technology class weekly.

Jan Leppert teaches art and technology at Yacolt Primary. Check out her website at <http://yacoltvisualarts.weebly.com/>



Watermelon by Gavin (gr.4) abstract art using intricate patterns and a specific color scheme

Museum Must Sees! continued

select sampling of emerging and highly-recognized artists and illustrators that make up the alternative comic genre of our region. With an emphasis on individuals who are willing to reinvent the way we look at and experience the art of comics and graphic arts, our exhibition offers an alternative to mainstream superhero comics by highlighting diverse narratives and new visual formats. The exhibition includes artists Peter Bagge, Paul Chadwick, Max Clotfelter, Taylor Dow, Ellen Forney, Eroyn Franklin, David Lasky, Mita Mahato, Tom Van Deusen and Jim Woodring.

Northwest Museum of Art and Culture (Spokane)

<http://www.northwestmuseum.org/exhibits/>

Paintings of Grand Coulee Park

September 2016 – January 2017

Whether rendering the glacial valleys of northeast Washington, the barren hills of Central Idaho, the pastures and forests of the South Carolina Upstate or the marshes of the Carolina low country, Linda Cancel's tonalism finds its voice in the effects of atmosphere on the horizon. Linda will be creating works that represent the beauty and mystery of the 130 mile lake formed by the Grand Coulee Dam as a collection of paintings for the Artist-in-Residence program for Lake Roosevelt National Recreation Area.

Lost Egypt: Ancient Secrets, Modern Science

September 2016 – January 2017

Using hands-on challenges, authentic artifacts, and guidance from real archaeologists, **Lost Egypt** shows how modern science and technology can reveal the mysteries of Egypt, its culture, and its people. Visitors will discover a real human mummy, animal mummies, as well as scans, forensic facial reconstructions, and – for the first time ever – life-size rapid prototypes, displaying the mummy in various stages of “unwrapping.”

Samantha Kelly is the Tacoma Art Museum Director of Education and the WAEA Museum Division Rep





2016 Fall Conference Preview

In the works: workshops, keynotes, an art show and more!

October 14-16, 2016

Located on the Western Washington University campus in Bellingham Washington, attendees will enjoy the beautiful fall landscape and sculpture gardens.



Show your artwork in the 12MAX show in the B Gallery on Western Washington University's beautiful campus. See the website and page 30 for more details on this special members only show.

Artwork (left) by Trinity Osborn

Learn new skills, connect with vendors, recognize excellent teachers at our Awards event and hang out with some amazingly cool people, other ART teachers like you!



Online registration opens soon! Keep an eye on the Facebook and website for details.





Before and after “Ticketed”

Hands-on Workshops include sessions taught by WWU Arts Faculty include pottery, printmaking, figure drawing and more for just \$30 each.

Over 30 best practice, hands-on and “make and Take” sessions on Saturday are included in the registration fee of \$135 (early bird price till 9/15/16)

Friday October 14, 2016 from 6-9pm \$30 Ticketed Workshops

1. Life Drawing Workshop (with Cara Jaye of WWU) **15 spots**
2. Introduction to Relief Printmaking (with Lisa Turner of WWU) **15 spots**
3. Go Anywhere! Be Anyone! A green screen tutorial (with Chris Vargas of WWU) **10 spots**
4. Ugly Critters for All: Create, Design, Sew and Stitch Ugly (with Debbie Supplitt) **15 spots**
5. New Art Forming (with Ben Chickadel) **15 spots**

Sunday October 16, 2016 from 9am-12pm \$30 Ticketed Workshops

1. Introduction to the Potter's Wheel (with Ryan Kelly of WWU) **10 spots**
2. Street Art vs. Graffiti (with Debbie Supplitt) **15 spots**

Double the Key Notes = Double the FUN!

Ian Sands

After graduating from the School of Visual Arts NYC (Pop 9 million), Ian took a job teaching middle school art at Roseboro-Salemburg NC (Pop 2,300). After a bit, he decided to try his hand at climbing the corporate ladder. Although he enjoyed working for 9 bosses and relating to Dilbert jokes, he felt something was missing. He decided to take a tiny, minuscule pay cut and go back to teaching. Upon his return he taught at Apex High School and forged new paths in “Teaching for Artistic Behavior” at the high school level. Recently he moved to a new school and is cooking up learning and trouble in equal portions.



Juliette Aristides

Juliette Aristides is a Seattle based painter who seeks to understand and convey the human spirit through art.



Aristides is the founder and instructor of the Classical Atelier at the Gage Academy of Fine Art in Seattle, WA. Juliette teaches workshops both nationally and internationally. She has authored many books on classical drawing and painting. She continued to study drawing and painting at the Pennsylvania Academy of Fine Art, then at The Atelier in Minneapolis in the tradition of Richard Lack. Juliette spent a year working with a small group of students at Jacob Collins’ studio prior to becoming a founding member of the Water Street Studio in Brooklyn, New York.





Making Connections With The Washington State Art Collection: My Public Art Portal

By Valerie Peterman

The Washington State Arts Commission (ArtsWA) has a new resource that we hope will support educators across our state, and it is free! My Public Art Portal provides searchable access to images of nearly 1,000 artworks that are located at statewide K-12 schools, colleges, universities, and state agencies. There are a number of ways we think you might use the Portal, and we want to hear from YOU about other ideas you have.

Washington's publicly-sited State Art Collection represents who we are by evoking both our vibrant cultural heritage and our community connections. Established in 1974 by the state Legislature, the Collection has grown to over 4,500 contemporary artworks. The Collection includes two and three-dimensional, free-standing, and integrated artworks created by notable local, regional, and national artists. It is a vital asset to be celebrated, experienced, and explored. Local communities lead in the selection and development of the Collection, ensuring that it is rooted in our public places.

The State Art Collection has been online since early 2015. Artworks are being added continually, with the goal of publishing half of the State Art Collection online by July 2017. For each artwork published on the Portal, ArtsWA staff research and confirm detailed artwork information, write interpretive descriptions about the art, perform physical assessments of the artwork's condition, and capture quality photography of the artwork in its site.

Optimized to connect the geographically widespread collection with the public in a virtual "gallery," you can access the online collection via My Public Art Portal at www.artswa.org. There are several search options available to

explore images and information about public artworks from across our state. You can find artworks by keyword or using a variety of search fields, including searches by artist, by county, by type of site or by material type. There is also a toolbar designed to help guide your search, where you can view a map to select artworks in a given county, browse artists, or view galleries of award winning projects.

My Public Art Portal can be a great teaching tool and can be explored and utilized to support your curriculum. At ArtsWA, we are excited about fostering connections between public art and arts

Customize thematic groups of artworks to demonstrate techniques or approaches to art-making.

learning. The Portal provides several opportunities for working on this:

Customize thematic groups of artworks to demonstrate techniques or approaches to art-making. For example, we've put together online exhibitions with titles such as "Landscape," "Portraiture," and "Repetition and Pattern." Within each of these groups you will find images by different professional artists, showing different approaches and examples. Do you have ideas for what kinds of artwork groupings would support YOUR classroom curriculum? Get in touch with us and with enough advance notice we can create an online exhibition showing the specific artworks from the Collection that will help you illustrate your learning goals.



WASHINGTON STATE ARTS COMMISSION MY PUBLIC ART PORTAL



ArtsWA.org

The Washington State Art Collection is now online, with artworks added continually. Explore images of public art from across our state, download sample lesson plans, and create thematic online exhibitions to support your curriculum.



From left to right, artwork copyright Rupert Garcia, Barbara Carrasco, and Gwen Knight. Photos are courtesy of the artists. These artworks are part of the curated online exhibition "Visual Arts Learning: Portraiture," accessible via My Public Art Portal. For more information please contact collections@arts.wa.gov.

Lesson plans based on public art. We currently have four visual arts lesson plans posted in the Portal; one each for grades K-2, 3-5, 6-8, and 9-12, and all easily modifiable to best fit your students. These lessons connect pieces of public art with arts learning concepts, for example: in "Thinking Big, Thinking Small," images of larger-than-life flowers are used to inspire younger students to experiment with scale and story. For older students, the "Creating Public Art" lesson plan looks at the process behind developing public art, including design proposals, budgets, and scale drawings.

Do you have ideas about other kinds of lesson plans that connect works of public art with your classroom learning goals? Let us know! We are interested in developing more lesson plans in the future.

Check out what's near you. You can look up works of art in the Portal by county and city; perhaps there are works that are near you that you

can discuss in the classroom, and then have students view in person as well. This could demonstrate of the value of the arts in our communities.

The Washington State Arts Commission is dedicated to cultivating collaborative relationships with our partner agencies and increasing public access to the State Art Collection. Public art enhances and enlivens public spaces, and can also serve as a great jumping-off point for active arts learning for K-12 students. With the growth of the online Portal, we encourage Washington's Art Educators to help us brainstorm new ways to connect public art and education. To give us your input, or to get started creating an online exhibition, please contact collections@arts.wa.gov.

Valerie Peterman is the writer and researcher for the Art in Public Places program's My Public Art Portal.



Board Notes and ESD reports

A brief recap of the monthly board meetings summarized by Cynthia Gaub.

April 2016

This month's destination meeting was held at the Northwest History Museum in Spokane, Wa. Twelve board members, general members and even some friends from Idaho joined together for the meeting. We adjourned to lunch at a local bar, then toured the museum.

Shout-Outs:

A huge **Thank You** to Laurel and Nancy for a great YAM month. The Schack show, NAEA national exhibition and flag selection are each a tremendous amount of work. The board thanks them for their service. Nancy will continue with the YAM Show and Flag contest as Laurel steps out of her flag role.

VOTES OF NOTE:

It was voted to give each scholarship applicant a \$100 gift certificate to an art supply store due to the low funds available. (only \$395 in the scholarship fund.) A new scholarship committee will be formed with plans to find additional revenue sources for next year.

A new program to assist members was created. **"Mileage to Membership"** will be a scholarship that potential members can apply for to help cover the NAEA/WAEA membership fee. Funds will be collected for this scholarship by board members donating their meeting mileage reimbursement.

It was voted to renew our "Arts Alliance" membership for \$60.

Reports and Reminders:

We heard an update on Artstime and the new format. This event will be targeted towards classroom teachers and will be held in March 2017.

The Scholarship program was discussed. We accepted Laurel's resignation from the position and opened the position up for a new chair person.

Treasury Report shows a current balance approximately of \$20,000, with many upcoming conference expenses.

Dick Blick has paid for a year's worth of ads in Splatter! One step closer to having Splatter a self-sustaining publication.

Conference hotel registration info is ready for the website. Cut-off for the \$135 rate is Sept 12th.

Bylaws, job descriptions and more will be updated this summer at the leadership retreats.

ESD 101 held a march membership workshop where they worked on a Syria student project. They also regularly meet for the 1st Friday Gallery walk.



One Starry Night (1 of 7 panels) Digital and Watercolor Illustration by Chan Ha Kim

May 2016

This month's destination meeting was held at The Schack art center. Sixteen board members and general members and newcomers joined together for the meeting. We adjourned to tour the Chuck Close Print and Process show, followed by lunch at a local restaurant.

Shout-Outs:

Congrats to Pamela who has been selected for the School for Arts Leaders training this summer. The board voted to support her registration fees of \$800.

The OSPI High School show was a success. Gale presented the Tribute Award to Faye Scanell. The work of art chosen for the WAEA Tribute Award was by Chan



Ha Kim. \$200 was paid to the artist and the work was framed at a cost of \$600 and will hang at OPSI.

VOTES OF NOTE:

mARTa Olsen was voted into the open Scholarship Chair position and will support Faye with ESD 121.

It was suggested that a Grant Committee be formed, we are looking for someone with grant writing experience.

Pamelia will take over ESD 113 after she transitions out of the Co-president role in October.

THRIVE Art will sponsor the Viking hall at WWU for our Awards luncheon. This will save the conference committee \$900 in facilities rental fees.

Supporting funds for the summer leadership retreat were voted in. All board members will pay 50% of the room/board and event costs with the general fund covering remaining costs for this new event. (see ad in this issue and info on the website, or ask a board member about attending.)

Reports and Reminders:

We got an update on the excellent plans for the Board retreat in August.

ESD 114 reported that the North Kitsap Festival of the Arts was a huge success. They were also honored to have student, K. Smith, win an honorable mention at the OSPI High School Show.

ESD 189 reported another successful “Evening of the Arts” held at North MS with an attendance of over 300 people. Also Glacier Peak HS held their annual “Night of the Arts” event on May 5th, again to great crowds. This year the ASB included an awards assembly and horticulture students held a plant sale.

ESD 113 reports that their Oakland Bay Jr. High annual arts event will be on June 2nd.

Keitha shared a website that she is working on that will be an educational go-to site. www.ed-hybrid.org will support educational advocacy issues.

Membership Reports that membership continues to fluctuate but numbers continue to stay over 300. This will allow us 2 votes at the national delegates’ assembly if numbers continue to stay above 300. This will be the first time in many years that WAEA has had 2 votes.

Advocacy reports that Faye will attend that upcoming

Cultural Congress. Also James is working with Senator Christine Rolfes to get some legislative language updates that can support more arts. The wording change will hopefully prevent students from being pulled out of arts to have remedial math and English courses.

June 2016

This month’s destination meeting was held at Kirkland Art Center. Seventeen board members and general members joined together for the meeting. We adjourned to check out the museum and then have Indian food on the beautiful Kirkland waterfront.

Shout-Outs:

Huge thanks to Carl for setting up this meeting, including volunteering at the space to allow us free meeting space.

We already have seven paid vendors for our Fall conference. This is the earliest we have had solid commitments. We are excited for the number of vendors our members will get to interact with this fall. Advertisers in this issue include some of these paid vendors.

VOTES OF NOTE:

The board was sad to accept Enid’s resignation. This opens up the High School Division Chair.

Kate Baker’s nomination for the next president-elect was accepted by the board and she will appear on the ballot at the fall conference.

Reports and Reminders:

We started the meeting by sharing our favorite success story from the school year. It was amazing to hear about the great community building, student uplifting, STEAM generating and 21st Century innovation that is occurring around the state.



Kirkland Arts Center Front Stairwell



Executive Board

A directory of our executive board members

**Mari Atkinson**

ROLE: Co-President and NAEA Pacific Region Middle School Rep.
Location: Olympic View MS/ Mukilteo
Email: copresident2@waea.net
atkinsonmb@mukilteo.wednet.edu

**Pamela Valentine**

ROLE: Co-President
Location: Oakland Bay JH/ Shelton
Email: copresident1@waea.net,
PVALENTINE@SHELTONSCHOOLS.ORG

**Tracy Fortune**

ROLE: Secretary and Advertising REP
Location: Lakes HS/ Clove Park SD
Email: advertising@waea.net
secretary@waea.net

**Toni Minish**

ROLE: Treasurer
Valley View MS/ Snohomish
Email: treasurer@waea.net
latona.minish@sno.wednet.edu

**Mandy Theis**

ROLE: Co- President-Elect
Location: Da Vinci Initiative/ Seattle
Email: mandyhallenius@gmail.com

**Cynthia Gaub**

ROLE: Splatter, Co- President-Elect
Location: North MS/ Everett
Email: splatter@waea.net

Board Notes and ESD reports continued from page 21

Awards: While we have a number of nominations for a variety of awards this year, Gale is still waiting to hear back from the nominees to receive their resumes so that they can be properly scored on our awards rubric. She is officially calling for a scoring committee. Carl, Cynthia, and a few others have offered to help score once all the resumes are submitted. Scoring will be done via email. If you are interested contact Gale at galeriley@frontier.com.

Conference plans are moving forward. We have 8 ticketed workshops and over 30 sessions for Saturday. Enid made some progress with catering, but we are on hold with several items until we find out if we can reserve the Viking hall for the lunch event.

Art Show: Ed shared the details for the conference art show and the logo was voted on. Participation info is

officially available on the website and in this issue. This is a WAEA members only show.

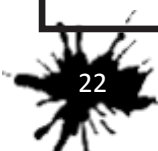
Do you have something to share?

Attend a board meeting to get your ideas out there!

ESD/Division Reports are accepted in person at any board meeting, or via email to the Co-Presidents and now online with our easy short form.

<http://goo.gl/forms/e6DD2Gw1Pj6ZYk8w2>

Any board member, committee chair, ESD or Division Rep or active WAEA member can use this form to submit information about the progress of projects, initiatives, events, and work that move the mission of WAEA forward. Quick reports can be done as often as there is news to report, but should be done quarterly.



Welcome New Committee Chairs and ESD Representatives

Becoming a board member, committee chair or a local Educational Service District Representative is a great way to get involved in the WAEA. There are many different committees that need leadership, or you might even have your OWN NEW Committee idea! As an ESD Rep or Division Rep you will help to grow our membership while making connections and meet new teachers in your nearby school district. We have many ESD areas that are unrepresented and need members to step into this role.

New Scholarship Co-Chair and ESD 121 Co-Rep: mARTa Olson Seattle, WA

Washington Art Education Association has always been an anchor for me to connect to my colleagues across the state of Washington and the US. Once I began getting involved in WAEA, I did not feel alone in my classroom or school district without supportive and critical friends to share my work with. I learned through WAEA ways to deal with political issues to improve instruction and the arts in education. I have a VOICE we have a VOICE! As a retired member of WAEA I plan to support the ESD 121 and try to get more teachers involved in our professional groups. It is such a big ESD and I am so happy to work with Faye and share the load to reach out to our colleagues about WAEA. The scholarship committee is also an area I helped found years ago and will enjoy doing work for to support our wonderful art students.



New Higher Education Division Rep: Jodi Patterson

I traded one "Washington" for the other when I moved from the D.C. area to Cheney, WA, about three years ago to accept a position as professor and coordinator of art education at Eastern Washington University. I have been a member of the NAEA since 1992 – with membership in West Virginia and Michigan chapters (where I earned tenure as a k-12 art teacher). I am also a working artist with an active international exhibition record, and an editor for Artizein: Arts and Teaching Journal. My co-editors are the

amazing Dr. Peter London and Dr. Barbara Bickel. Our vision for the Journal is my vision for art education in general -- to enlarge and shift the current professional domains of visual art, teaching and learning with a renewed examination of what is possible through an expansive interdisciplinary lens that includes not only visual art, but all of the creative arts.

New ESD 114: Kitsap/Olympic Peninsula: Kate Cox-Ebert supporting the peninsula teachers from Poulsbo Middle School.

New ESD 123 in the Tri-Cities : Robert McMinn "Art is the universal language that enriches the lives of all students," says Robert McMinn, art instructor at Richland High School. "We want students to explore, experience and experiment with their own creativity in producing visual art." Robert returns to the board to support Tri-cities teachers.



And...switching from Elementary Division to Middle School Division: Craig van den Bosch

WAEA Committee Chairs, Division and Educational Service Representatives

Committee Chairs		
Advocacy	Faye Scannell	fsnyder1962@gmail.com
Awards	Gale Riley	galeriley@frontier.com
Membership/ Social Media	James Andrews	jandrews@nkschools.org
Membership/ Mailing List	Kate Baker	kabaker@seattleschools.org
Scholarship	Carl Clausen	cjclausen@aol.com
Scholarship	mARTa Olson	marta@theswallowkingdom.com
"Splatter" Editor	Cynthia Gaub	splatter@waea.net
Teacher Art Show Coordinator	Ed Crossan	ecrossan@fwps.org
Webmaster / Communications	Trinity Osborn	trinity.osborn@tbcs.org
Youth Art Month	Nancy Jordan	jordannb@mukilteo.wednet.edu
Division Representatives		
Elementary	Open Position	
Middle Level	Craig van den Bosch	vandenbosch.craig@gmail.com
Secondary	Open Position	
College/Higher Education	Jodi Patterson	jpatterson6@ewu.edu
Museum	Samantha Kelly	skelly@tacomaartmuseum.org
Independent/ Private Institutions	Trinity Osborn	trinity.osborn@tbcs.org
Administrator/Supervision	Jonathan Lindsay	jlindsay@cornish.edu
Retired Art Educator	Carl Clausen	cjclausen@aol.com
Art Education Student	Open Position	
Executive Board Advisory		
Past-President	Cathy Tanasse	Cathy.Tanasse@sno.wednet.edu
Regional Vice-Presidents: AKA ESD Reps		
ESD 101: North East WA	Sherry Syrie	ssyrie@cheneysd.org
ESD 105: South Central WA	Open Position	
ESD 112: South West WA	Barb Holterman	Holterman.barb@battlegroundps.org
	Debbie Supplitt	supplitt.debbie@battlegroundps.org
ESD 113: Capitol Region	Open Position	
ESD 114: Kitsap/Olympic Peninsula	Kate Cox-Ebert	kcox-ebert@nkschools.org
ESD 121: Puget Sound	Faye Scannell	fsnyder1962@gmail.com
ESD 123: Tri-Cities	Robert McMinn	robert.mcminn@rsd.edu
ESD 171: North Central	Cyndi Noyd	cyndinoyd@gmail.com
ESD 189: North West WA	Cathy Tanasse	Cathy.Tanasse@sno.wednet.edu



WELCOME
EXPLORERS / INVENTORS
EXPERIMENTERS
/ ENTREPRENEURS / MAKERS
/ INNOVATORS / DREAMERS

Creative Careers Start Here.

MASTER OF APPLIED ARTS
MASTER OF APPLIED ARTS LOW-RESIDENCY
MASTER OF DESIGN
BACHELOR OF FINE ARTS
BACHELOR OF MEDIA ARTS
BACHELOR OF DESIGN

1399 JOHNSTON STREET, VANCOUVER, BRITISH COLUMBIA ecuad.ca





Summertime – Time for ...

by Dr. AnnRené Joseph

Ah...Summertime! On the summer solstice (today), as well as throughout the summer days and nights, the melody and lyrics of the song (of the same name) echo in my mind and remind me how precious it is to simply “be.” A brief highlight summary of the song lyrics are to live easy, take time to notice the wonder and beauty of life and living, to rise up singing – spread my wings – and seize my days. The haunting and memorable melody of the aria “*Summertime*,” from the opera *Porgy and Bess*, was written in 1934 by George and Ira Gershwin. DuBose Heyward, author of the novel *Porgy* – used as the libretto for the opera – wrote the mesmerizing lyrics for the popular aria. The song is still immensely popular today, due in part to the title, as well as the story and music of the melody. Our lives are such – metaphorically speaking – as our summers tell a special story about each of us that is uniquely our own. Summertime gives us the opportunity to do more of what we love to do, and to do it day after day for more than a week.

Just like the song, the actual season summertime evokes images of rest, relaxation, vacation, Renaissance, rejuvenation, restoration, time to do, and time to be. So, what’s on the creative “to do” list? Some things may be trips, college, new learnings, writing, reading, traveling, and camping, cooking, gardening, canning, sewing, painting, sculpting, creating, studying, visiting friends and loved ones, and simply doing whatever it is that we enjoy doing – day after day. We are all creative souls, and our days and nights – in the summer – seem to offer us more time to be our “creative selves.” Mihaly

Csikszentmihalyi, in his book *Creativity*,

admonishes that “...the first step toward a more creative life is the cultivation of curiosity and interest, that is, the allocation of attention to things for their own sake” (p. 346). Sound familiar – like “art for art’s sake?”

School’s out. Breathe. Close your eyes. Take some time to unwind and reflect on the year past, enjoy the present, and vision for the future. A key question that will spark creative energy is: “*If time and money were not an issue, what would I be doing?*”

There is great energy and movement to be found in metacognition or “thinking about thinking about something” for longer than a moment. And, as well as thinking about or pondering this essential question about your essence, write down your thoughts, make a clear vision, and move forward in the direction of this dream. Many of us are and have been doing this sort of activity for a long time. Some of us have yet to begin.

As we do our art, and live our art, and be our art in our life and living, take time to capture your progress in photos, in your visual artworks – whatever your media or medium, and in the countless ways that you create, share, and treasure

the work of your heart, soul, mind, and strength, through your countless talents. “You are an artist! You live life out loud,” as the novelist, playwright, and journalist Émile Zola has stated. This summer, live your life out loud. Seize your days with intention. Celebrate you. It is great to be alive. L’chaim – to life and summertime! Included is a photo of one of my “summertime” excursions and ways of “being.” Enjoy.



Dr. AnnRené Joseph is a retired arts supporter. She was the WAEA Tribute Winner for 2015.





NOT JUST **HOW** YOU MAKE ART **WHY** YOU MAKE ART

Art isn't just a subject, it's a way of thinking.
Cornish College of the Arts is now accepting
applications and transfer applications for
Fall 2016 and Spring 2017.

www.cornish.edu | 206.726.ARTS | admission@cornish.edu

ART
DESIGN
FILM+MEDIA
INTERIOR
ARCHITECTURE

CORNISH
COLLEGE
OF THE ARTS

Artistic Habits Around the Room Game

Lesson Plan by Cynthia Gaub



Objective: To quickly introduce students to the “Studio Habits of the Mind” while doing hands on activities based on the habits.

National Core Art Standards VA: Cr1

Students Can Generate and conceptualize artistic ideas and work

Essential Question: What conditions, attitudes, and behaviors support creativity and innovative thinking?

Materials

- **Student Sketch books and pencils**
- **Observe Center:** Eye spy books and/or microscopes with interesting slides.
- **Express Center:** oil pastels, 4x5” black construction paper and adjective word cards.
- **Develop Center:** tempera cakes or water colors in only primary colors, 4x4” squares of watercolor paper, brushes, water cups.
- **Envision Center:** basic drawing supplies, 4x5” drawing paper and noun word cards.
- **Persist Center:** wood blocks
- **Explore Center:** quick sculpture supplies like foil, pipe cleaners, cardboard, yarn, masking tape, scissors and a spinner with your prompts.

Motivation: Explain the habits with a definition and a guiding question. Have the kids Think, Pair, Share with each question to list ways they think artists would use each habit. Tell the class that they are going to test out these habits, while exploring some art activities.

Review the Centers: Share your procedures and expectations for each center. I have a power point with a picture of the center activity and a sign with directions at each center for reminders.

Rotate Through the Centers: Rotate through the activities , spending between 10-20 minutes at each center. After the students do the activity, have them write some observations or discoveries in their sketch books or notes.

Formative Assessment: While students work in the centers, circulate and assess through observation and questioning.

- What does it look like and sound like when an artist is using this habit?
- How might you use this habit if you were working on a painting?

Reflecting: If you are continuing to new centers on different days, begin the next class with a quick sharing of observations and discoveries from the day before. We did some group sharing for our notetaking.

Summative Assessment: End the unit with a QUIZ where students identify which artistic habit is being used in a short scenario. I used the ideas my students shared in our class discussions.

TECH TIP: Ipad has a free spinner APP called “Decide Now!” or make an old school spinner.

Find more Around the Room Games at
www.artectivity.com



Not A Member Yet? Why NOT?

Become part of the largest professional organization established by visual arts educators for visual arts educators!

WAEA membership includes:

- Discounts on WAEA Fall Conference registration fees and other workshops
- Eligibility for our Annual Awards Program
- Subscription to our Quarterly *Splatter* Magazine
- Eligibility to publish in *Splatter* Magazine
- Eligibility to enter the **Youth Art Month** Contest
- Monthly Destination meetings often with free museum tours
- Discount membership to the Seattle Art Museum
- Access to special ESD events and meetings in your area
- Facebook Community with current job and art class announcements, and opportunities to connect with other art teachers in your area

Your membership also includes these NAEA membership benefits:

- Full access to exclusive members-only content on the NAEA website
- Subscriptions to *Art Education* journal and *NAEA News*—NAEA's premiere bi-monthly publications
- Subscription to the digital version of *School Arts*
- Access to the Instructional Resources Gallery
- Free registration for NAEA's webinar series
- Discounts on NAEA National Convention registration fees and other professional learning events
- Eligibility for national awards and grants
- Discounts on a variety of insurance programs including Professional Liability Insurance, Life Insurance, Disability Insurance, Health Insurance, Auto & Home Insurance

NAEA/ WAEA Membership Application

Membership Prices:

- ☐ **Active:** Art teachers or those related to the field. **\$90**
- ☐ **First Year Professional:** Recent graduates entering their first year of teaching. Valid for one year. **\$75**
- ☐ **Student:** college students. **\$45**
- ☐ **Retired:** Retired educator. **\$65**
- ☐ **Associate/Advocate:** School personnel and other individuals with an interest in art education. **\$90**
- ☐ **Institutional:** Companies, Institutions or departments involved with art education. **\$235**

Please print all information below:

New Renewal I.D. Number _____

Name _____

Address _____

City _____

State _____ Zip + 4 _____

Telephone Number (_____) _____

WA ESD Region: _____

School: _____

Graduation Date: _____ (for student membership)

Payment Information:

- ☐ **Check** Enclosed
- ☐ Please **CHARGE** my account \$ _____

American Express VISA MasterCard

Credit Card Number _____

Expiration Date _____ Sec. Code _____

Signature _____

Were you referred by an NAEA/WAEA Member? Please let us know! Member Name: _____

Mail this form to: Member Services Team,
NAEA PO Box 1444, Merrield, VA 22116-1444

E-mail: members@arteducators.org

Call us toll-free at: 800-299-8321

Leadership Opportunities

Below are a number of open board positions. Being a committee chair, ESD Rep or board member is a way for you to participate in and help grow your WAEA professional organization. All members are always welcome to attend board meetings to find out more about any opportunity.

Help out at the Fall Conference

Check out our online volunteer list or contact a board member to see how you can help.

www.volunteersignup.org/EBKQL

Provide a voice for teachers in your region.

We are looking for representatives for **ESD 105: YAKIMA** and **ESD 114: Port Angeles/ Port Townsend**. Attend a meeting to nominate and be voted into one of these important positions. Job includes holding gatherings in your area to inform teachers, building membership and attending meetings to share the needs of your areas.

Publish your lessons ~ Show off your student work

Seeking **Splatter Articles**: Any member can submit their articles, lesson plans, student artwork, research, organizational tips and other ideas for our quarterly publication. See the website for submission details.

www.waea.net/splatter/

Other Leadership Roles?

Don't see a role here that you are interested in? Have an idea that would grow our membership, support members or provide professional development opportunities? Then come to a board meeting and share your ideas.

WAEA's Educators as Artists 12MAX Art Show

Exhibition Title: Educators as Artists 12MAX Art Show

Exhibition Dates: Friday October 14th to Sunday October 16, 2016

Opening: Friday October 14th

*Submission Dates: Work may be submitted Now until OCTOBER 1st**

Installation Date: Friday Morning October 14th

Return Date: Please Remove your work on Sunday October 16th

Cost: \$11 plus \$1 service fee = \$12MAX (proceeds go to WAEA's scholarship fund)

ART EXHIBIT DETAILS:

The Educators 12MAX Art Exhibit will open at the annual WAEA Conference to be held at Western Washington University in Bellingham WA. and run from Friday October 14th to Sunday October 16, 2016. A single art piece may be submitted by any current WAEA member (if needed, join or renew your membership now on the NAEA website <https://www.arteducators.org/promo/join>).

All Artworks must be recent, no more than two years old, which is defined as being created after May 2014 and/or finished, dry and received by the October 1st 2016 submission date.

2 DIMENSIONAL ART SPECIFICATIONS – Artwork itself may not exceed 12 inches in any dimension, excluding size of required Professional Mat and Frame. Mat/Frame should be appropriate for the artwork. Glass covering for pastels and watercolors etc. Frame only for acrylic and oil paintings etc. **MUST** be ready to hang, wire preferred.

3 DIMENSIONAL ART SPECIFICATIONS—Pottery, sculpture and Jewelry may not exceed 12 inches in any dimension, excluding any required base, brace, holder or display case. **MUST** be ready to Display with appropriate supports.

Register online: <http://ezregister.com/events/17618/>



Organized Splatter

Tips and Ideas For The Artroom

By Tracy Fortune

CLASSROOM MANAGEMENT TIPS

Looking for ways to improve the ways things run in your classroom? Of course it is important to have high expectations for our students, but how do we take that goal and make it happen? Consider ideas from Randy Sprick's *Safe and Civil Schools*. He emphasizes the importance of having routines with clear expectations and then explicitly teaching and practicing the activities that connect with each routine. To do this he recommends

using what he calls 'CHAMPS'. With this classroom management strategy, you establish the voice level of Conversation, how students ask for Help, specify the type of Activity, determine how much Movement is allowed and define what does student Participation look and sound like. For best results, teach each routine and revisit them after breaks and as needed.

CHAMPS	Entry Task Time	Whole Group	Small Group	Studio Time	Transitions
C onversation <small>Voice Level</small>	1	0/3	2	1-2	2
H elp	Ask Table Group Then Raise Hand	Raise Hand	Ask Table Group Then Raise Hand	Ask Table Group, Project Partners, Then Raise Hand	Ask Table Group Then Raise Hand
A ctivity	Entry Task Attendance	Discussions Instructions Demonstrations	Group Work Discussions	Planning, Creating and/or Reflecting	Clean Up Entry/Exit In Between
M ovement	Limited <small>Only to get Supplies</small>	Remain Seated	Remain Seated	Limited <small>Only to get Supplies</small>	As Directed
P articipation	Work Independently <small>In Entrance</small>	Work As Directed <small>In Entrance</small>	Work as a Team <small>In Entrance</small>	Work Independently <small>Limited Use of Materials Waiting to Make or Repair Only</small>	Work as a Team <small>In Entrance</small>
S uccess	Success	Success	Success	Success	Success

Do your students really understand your voice level expectations? Consider communicating this using a scale such as shown on the poster to the right.

VOICE LEVELS	
0	Silent
1	Whisper
2	Soft Voice
3	Presentation Voice
4	Outside Cheering Voice

Does it drive you crazy when many of your students ask you 'what are we doing today?' Try greeting them at the door with a small white board that gives them a snapshot of what they will be learning about, asks a probing question or specifies their entry task.



Got an Idea to Share?

Send a clear photo and short description of an organization idea or teaching tip you'd like to share with other art teachers. tfortune@cloverpark.k12.wa.us

Splatter Magazine a WAEA Publication

C/O Editor Cynthia Gaub

P.O. Box 1891 Snohomish, WA 98291

PRSRT STD
US POSTAGE PAID
SEATTLE, WA
PERMIT #2000



Magnetic Mon

Lesson Plan for Grades 2-12

Create a family logo!

The Japanese version of the family crest is called a "mon".

Why not create a mon for a modern, Western family?

As students learn about logos and branding, they'll use colorful magnetic sheets and permanent markers to create their family's mon — ideal for displaying on a school locker, family vehicle, or refrigerator!

DickBlick.com/lesson-plans/magnetic-mon

Request
a **FREE**
catalog!

Visit
DickBlick.com/requests/bigbook
to request a **FREE**
catalog!

BLICK®

800•447•8192 DickBlick.com